

THE  
**Royal  
Exchange**  
SINCE 1571

**RE:DEFINING  
WORKSPACE**

AT THE CENTRE OF COMMERCE



Welcome to The Royal Exchange, a globally renowned mixed-use headquarters with more heritage and culture than any other London address.

Founded in 1571, The Royal Exchange boasts a rich commercial legacy, having been home to Lloyd's of London in the late 1700s and later returning to its trading roots with the London Financial Futures Exchange in the 1980s.

While the building's iconic exterior remains protected as a listed landmark, the interiors have been thoughtfully restored and enhanced to provide state-of-the-art workspaces that meet the needs of today's businesses. The Royal Exchange is also a premier luxury retail destination, featuring a carefully curated collection of restaurants and boutiques.

[LEARN MORE ABOUT OUR HERITAGE](#) →

# AVAILABILITY SCHEDULE

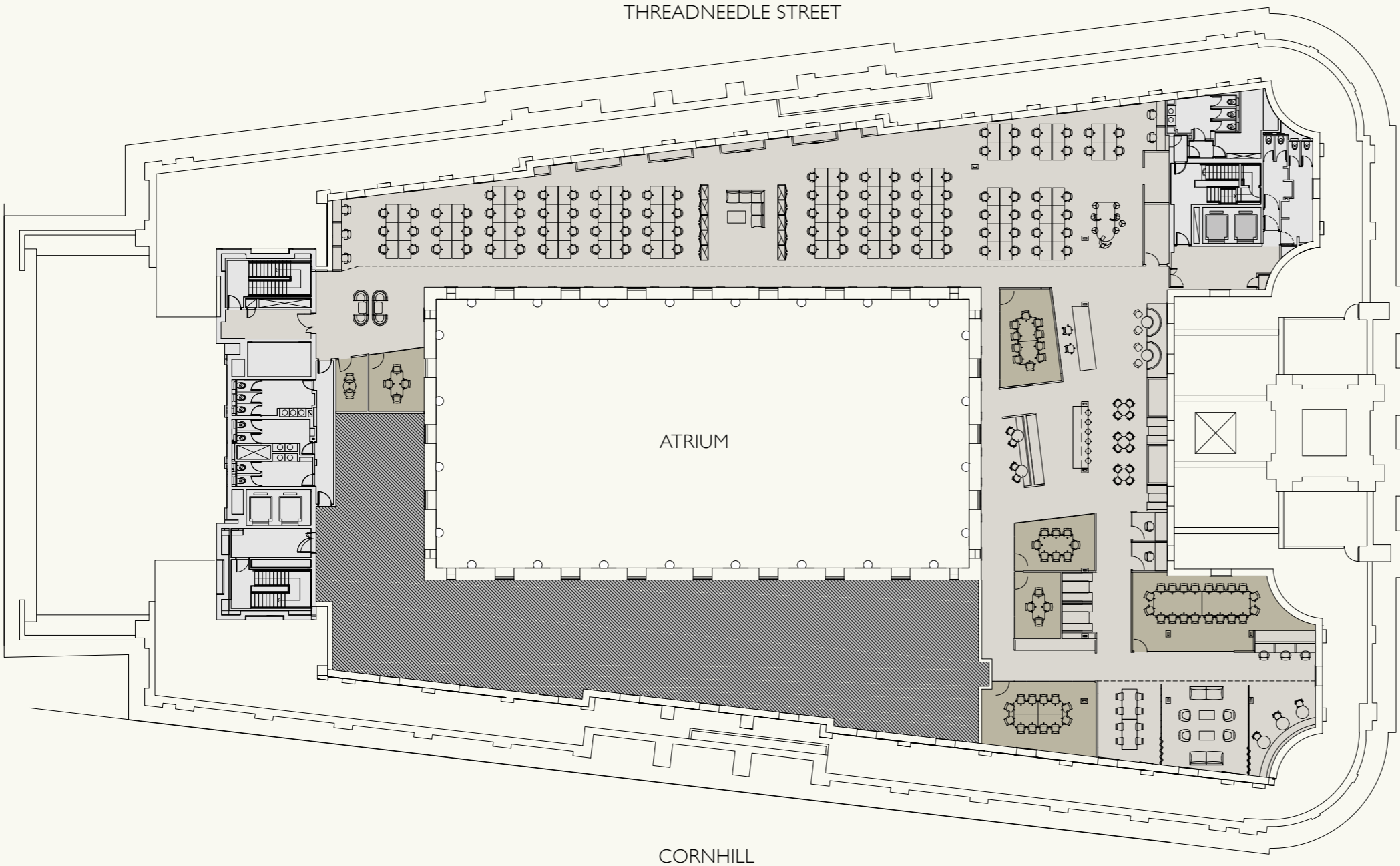
Floor	Size	Availability
Fourth floor	11,115 sq ft	Available



CGI Reception – indicative only



CGI Fourth Floor Reception – indicative only



# FOURTH FLOOR

11,115 sq ft / 1,033 sq m

Reception	1
Workstations	102
Quiet desks	8
Board room (20 persons)	1
12 person meeting room	1
10 person meeting room	1
8 person meeting room	1
6 person meeting room	1
4 person meeting room	1
2 person meeting room	1
Phone booths	2
Teapoint Breakout Area	1
Collaboration areas	5
Storage	1
Comms	1

Indicative layout only



CGI Fourth Floor Teapoint – indicative only

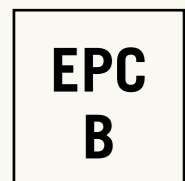


CGI Fourth Floor – indicative only

# SPECIFICATION HIGHLIGHTS

- New fully fitted workspace
- 4 pipe fan coil air conditioning
- Part exposed and suspended ceilings
- Raised floors
- Original features
- Newly refurbished on-floor WCs
- 3 manned receptions, 6 passenger lifts
- World famous luxury retail on-site
- Communal busines lounge and informal meeting area
- Fibre connected
- New end of journey facilities on the mezzanine level

## Accreditations:



**BUILDING USES 100% BIO GAS**

**ELECTRICITY IS SOURCED FROM  
100% RENEWABLE SOURCES**

CGI



CGI Shower – indicative only

# CONNECTIVITY SUMMARY

Your landlord and building operator have partnered with NCG as their preferred connectivity provider, offering pre-installed services into the building to help you get connected as quickly and seamlessly as possible.

## Available Services and Features

- Flexible contracts delivered in 10–15 working days
- Resilient connectivity options 100Mbps–1Gbps
- On-site installation and ongoing support
- Additional products including access points, routers, switching and phone systems

### Quick Installations

Dedicated internet services ready to use within 15 working days

### No Wayleave

Simplified installs saving you time and money

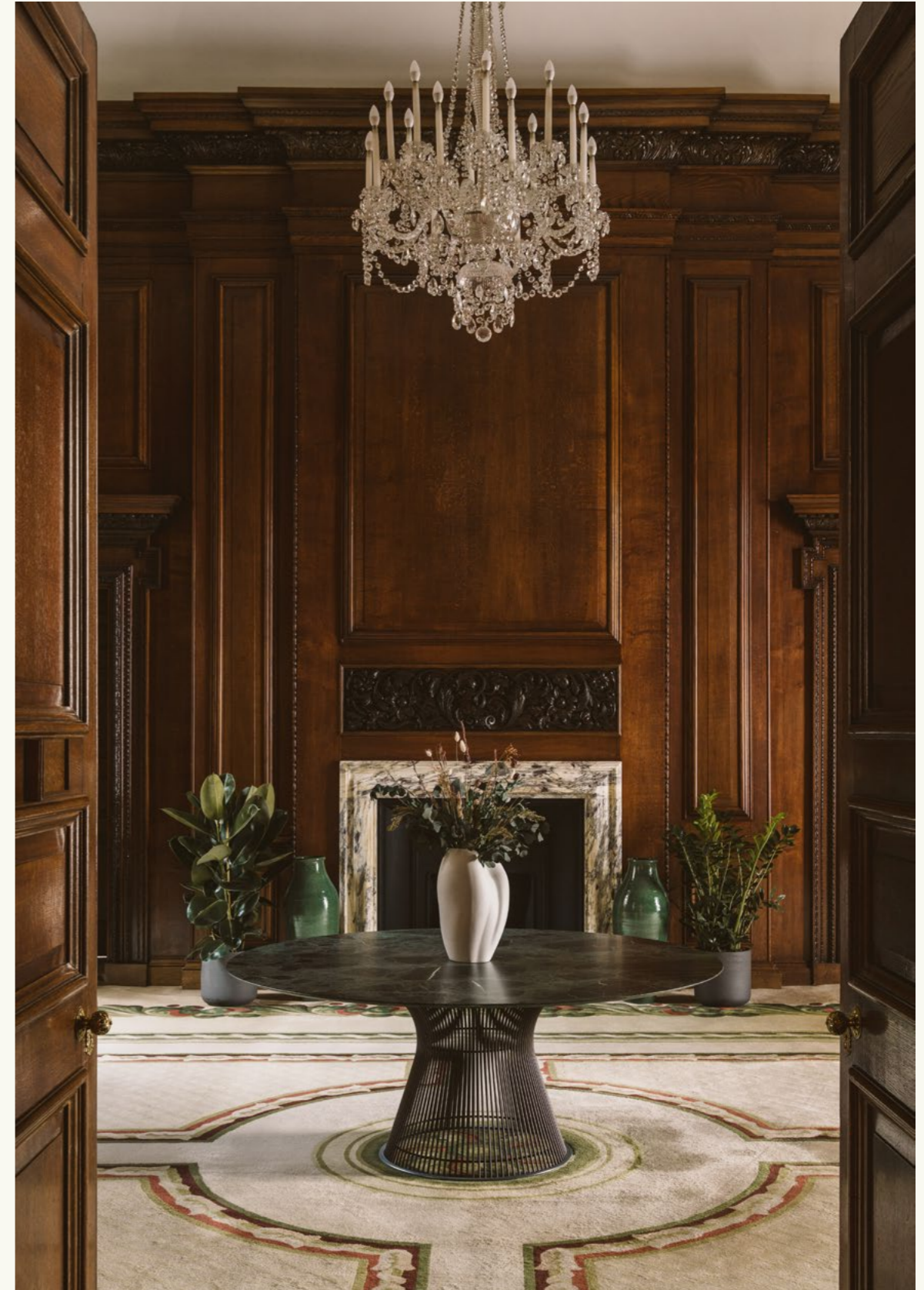
### Dedicated Bandwidth

100Mbps up to 1Gbps fully managed service available with NCG



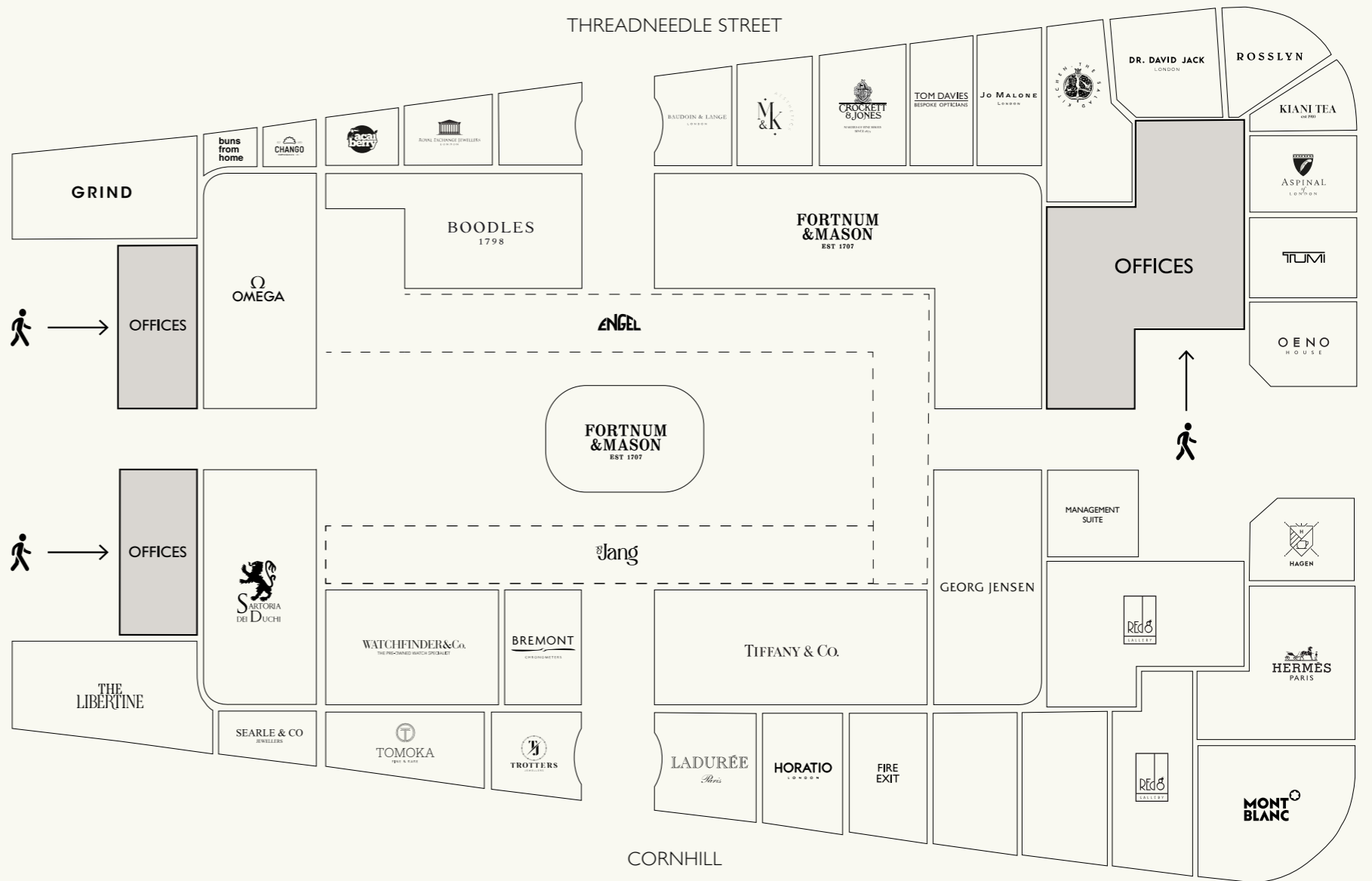
# BUSINESS LOUNGE

Occupiers have access to the stylish business lounge located on the first floor, ideal for meetings or breakout space.



# ON SITE RETAILERS

This iconic building offers exceptional food and drink options on site and with an unparalleled list of retailers, there's no need to go anywhere else.





Oeno House



The Libertine



Acai Berry



Buns From Home



Ladurée



Outside The Royal Exchange



Grind



Outside The Royal Exchange



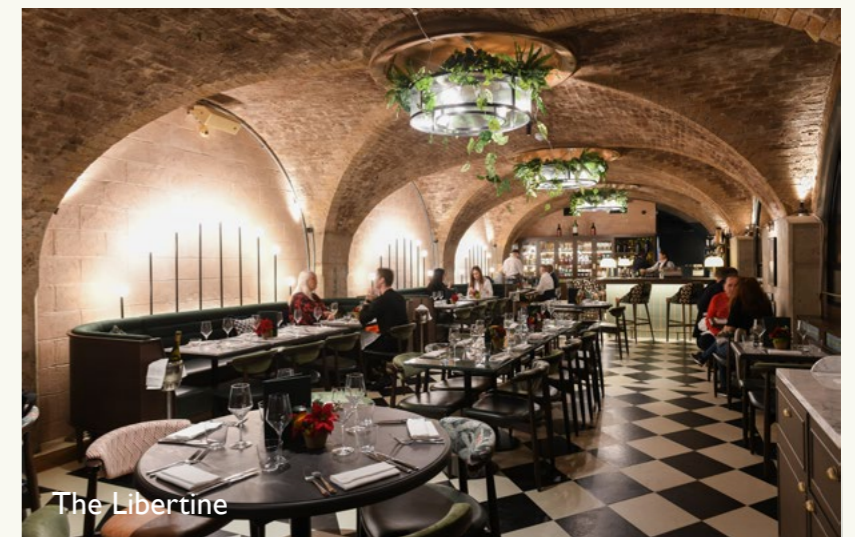
Fortnum & Mason



The Libertine



Buns From Home & Grind



The Libertine



# LOCATION

The Royal Exchange is situated at the centre of the City of London, located between Threadneedle Street and Cornhill with the great connectivity Bank station offers.

	CANNON STREET		6 MINS
	MANSION HOUSE		6 MINS
	LONDON BRIDGE		8 MINS
	LIVERPOOL STREET		10 MINS
	MOORGATE		10 MINS
	BANK		1 MIN
	MONUMENT		5 MINS

THE  
**Royal  
Exchange**  
SINCE 1571

---

LANDLORD

**RESOLUTION**  
PROPERTY

---

AGENTS

**allsop**

AMELIA BOWDER

07917 657 757

Amelia.Bowder@allsop.co.uk

JAMES NEVILLE

07789 658 540

James.Neville@allsop.co.uk

**NEWMARK**

SAM BOREHAM

07917 635 465

Sam.Boreham@nmrk.com

DAISY WALDER

07425 828 376

Daisy.Walder@nmrk.com

---

Allsop and Newmark, on their behalf and for the Vendors or Lessors of this property whose Agents' they are, give notice that: 1. These particulars are set out as a general outline only for guidance to intending Purchasers or Lessees, and do not constitute any part of an offer or contract. 2. Details are given without any responsibility and any intending Purchasers, Lessees or Third Parties should not rely on them as statements or representations of fact, but must satisfy themselves by inspection or otherwise as to the correctness of each of them. 3. No person in the employment of Allsop or Newmark has any authority to make any representation or warranty whatsoever in relation to this property. 4. Unless otherwise stated, all prices and rents are quoted exclusive of VAT. Subject to contract. November 2025.